

Leading AI in Schools with Eblana (RAIL)

May 2026



Rita Bateson

Course Author

Rita Bateson is a respected educator, author and mentor with over **20 years of experience in international education**. She has held key roles in international education, including Senior Curriculum and Assessment Manager at IB Global Headquarters and founding Head of Secondary at Nord Anglia International School in Ireland. **A renowned curriculum developer and textbook author**, she is also a seasoned workshop leader and consultant.

Rita currently serves as the Director of Education and co-founder of Eblana Learning, where **she focuses on helping schools harness AI's potential ethically and with confidence**, drawing on her deep IB expertise and practical insights.



Building an AI-Ready School

A framework to unpack how to lead responsible AI integration across your entire school community

Understand the
Landscape

Learn the **7 key trends**
of AI and education
research

Build Context

Identify the **6 critical risks**
AI poses for
international schools

Apply a
Strategic
Framework

Assess your school's
readiness against
the **Eblana 6P's** for
robust governance

Lead Phased
Implementation

Use the **4-phase AI
implementation
framework** to guide
your next steps

International Schools and the 'AI Storm'

Endless AI Research

Conflicting Best Practices

Regulatory Compliance

A Flood of New AI Tools

Ethical & Safety Concerns

IBDP/A-Level Submissions

Students Overusing & Misusing AI

Lack of Tailored Guidance for International Schools

Safeguarding

Lack of Involvement of All Stakeholders

Pressure to Upskill Quickly

Education Underuse & Overuse

*Is your school's AI use aligned with **your vision for teaching and learning?***

School Leaders

*"I just need to know **the rules of engagement**. If I know what the **right thing** is, I can make sure we do it."*

*"I don't know what **I don't know**."*

*"I just need to **get through** the next few years to retirement."*

Teachers must be the guardians of **safe** and **ethical** practice across **AI-rich** educational environments, ensuring that **students' privacy** and **human agency** are protected

Building an AI-Ready School

A leadership framework to understand how to lead responsible AI integration across your entire school community

Understand the
Landscape

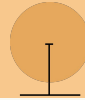
Learn the **7 key trends**
of AI and education
research

Build Context

Identify the **6 critical**
risks AI poses for
international schools

Patterns and trends

Increased friction



The irony of personalised feedback



Concern about emotional support



Academic integrity and cognitive offloading

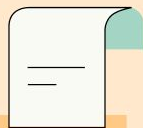


PEDAGOGICAL RISK

- **AI-Rich vs. Learning-Poor?**
- **The "Sympathetic Friend":** Does AI reduce productive struggle?
- **The Human at the Center:** Are teachers still in control?



The **6 Critical Risks** of AI in International Schools



Legal



Reputational



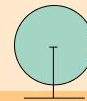
Societal



Environmental



Financial



Pedagogical

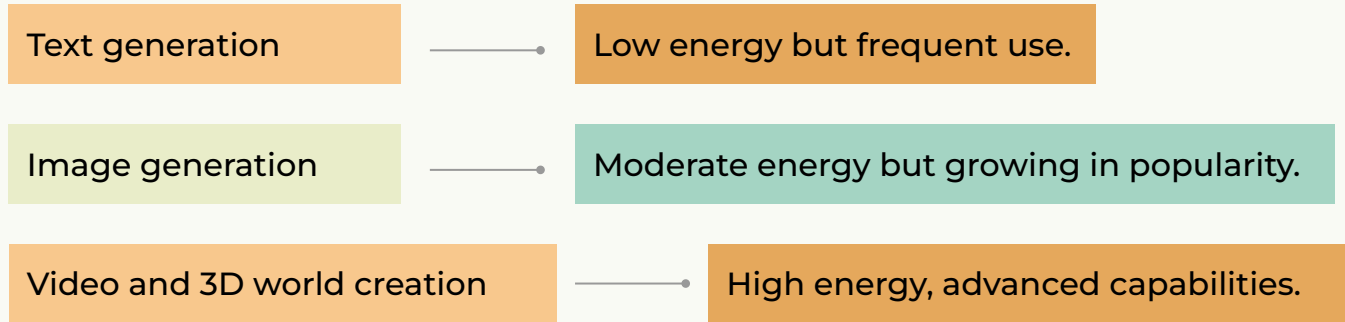
*“This data centre uses the same power as **200,000 homes daily.**”*

Irish Times, Apr 2026



Scaling Energy Costs: AI Tasks Compared

Resource Hierarchy for AI Tasks:



One query feels trivial—what happens when 500 students run 100 queries daily for 180 days?

Key Insight: The cumulative energy impact of AI is often invisible but significant.

What about the impact beyond text generation?

AI Image Explosion:

Over **15 billion images** in 2024, releasing around 7,500 metric tons of CO₂ (comparable to 1,600 vehicles' annual emissions)

In **January 2025** this figure was surpassed in the first three weeks.

In January 2026, it took **three days**

High Energy for Videos:

A single 30-second high-quality video can consume up to **5.4 million Wh**.

Deepfake activity surged by 303% during the 2024 U.S. elections, with 1,000 deepfake videos using energy equivalent to powering 504 households for a year.

Sora's closure was linked to competing compute (energy) demands.

Pop Culture Comparison:

The energy used for a 30 second deepfake video could stream the entire season of Friends 5000 times

Course

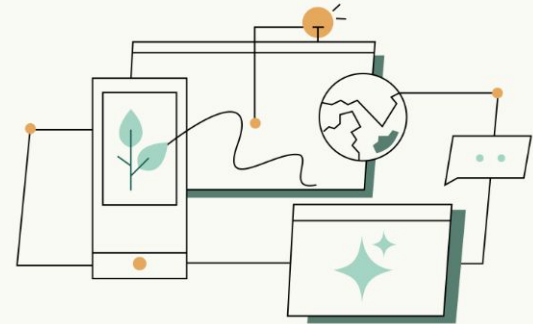
Sustainable AI Use

Balancing innovation and environmental responsibility in IB schools and classrooms

Copyright © 2025 Eblana Learning

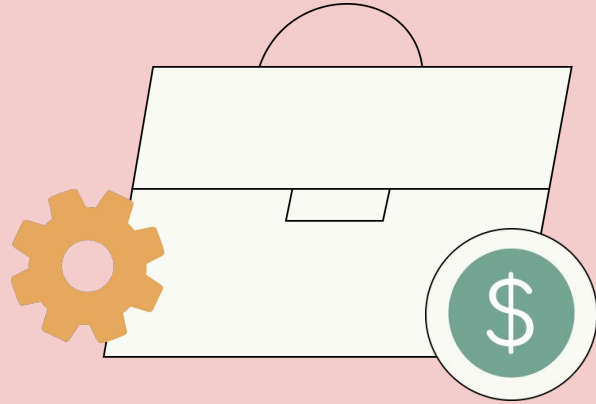
[Enroll Now](#)

8 Chapters 24 Lessons



Financial Risk

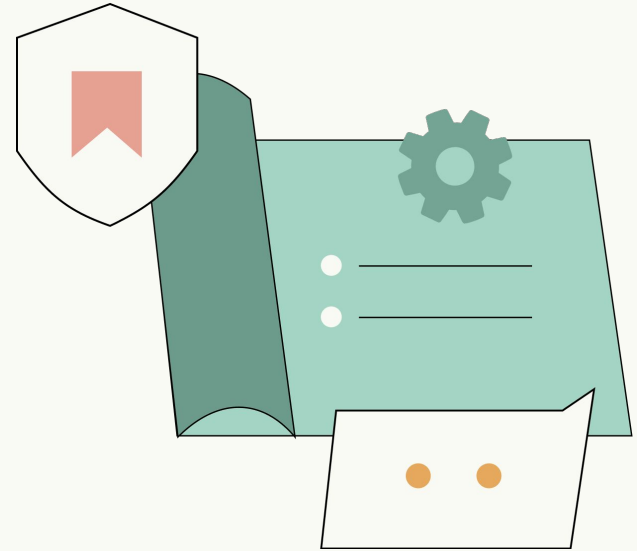
- **High CAPEX Costs:** Hardware investment
- **High OPEX Costs:** Ongoing platform fees
- **Unforeseen Costs:** Legal fines and data breaches



Legal & Regulatory Risk

Are we prepared?

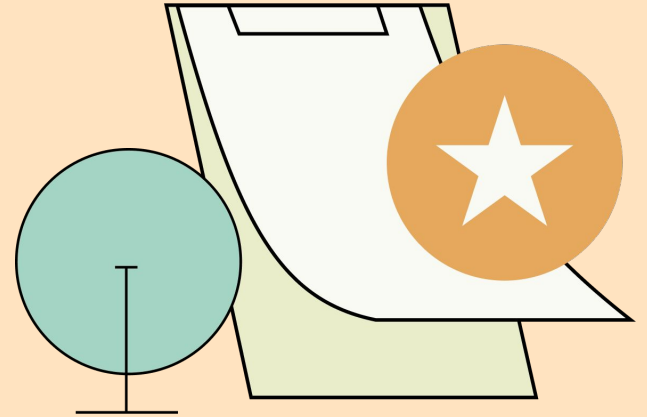
- **Data Protection Laws:** PIPL, CSL and DSL, GDPR, etc.
- **Use Case Registry:** Knowing every AI tool in your school.
- **Accountability:** Who is responsible for AI use?



Reputational Risk

What is your school's reputation in an AI-driven world?

- **Student Privacy:** Are we safeguarding student data?
- **Ethical Use:** Are we modeling best practices?
- **Accountability:** Who is responsible for what the AI does?



(.n)

/ˈeɪ aɪ slɒp/ - [aɪ slɒp]

AI Slop

Something which requires more effort to consume it than it took to create it.



The 4 AI formulas hiding in plain sight

Tony Robbins · LinkedIn · 1d ago



Tony Robbins · Following

#1 New York Times best-selling author, life and...

1d ·



Most people think they're stuck.

They're not. They're in a pattern they haven't recognized yet.

The same relationships. The same money struggles. The same moments where things start strong... and then fall apart.

Different faces. Different circumstances. Same core experience.

That's not coincidence. That's conditioning.

My newest LinkedIn newsletter goes deep on why these patterns exist — and exactly how to break them.

Subscribe to The One Thing so you don't miss what's coming next. Link in the comments.

FORMULA 1 · Setup / reveal

"Most people think X."

"They're actually Y."

FORMULA 2 · Rule of three

"The same X. The same Y.

The same Z."

FORMULA 3 · Contrast pivot

"Different X. Different Y.

Same Z."

FORMULA 4 · Negation reveal

"That's not X.

It's Y."

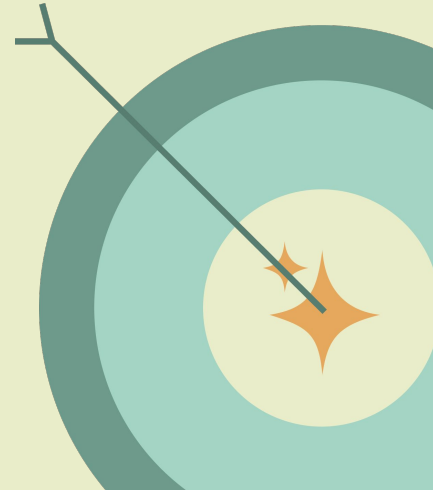


52

Credit: Dylan Latour

Students

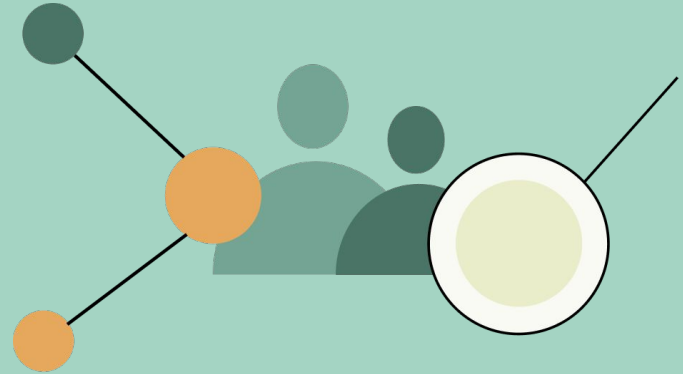
- *“If I wanted **AI feedback**, I can get that for myself. I wanted my teacher to **actually read it.**”*
- *“Don’t the teachers know we know what **AI slop** is?”*
- *“Do they think we can’t tell **they are all using it?**”*



Societal Risk

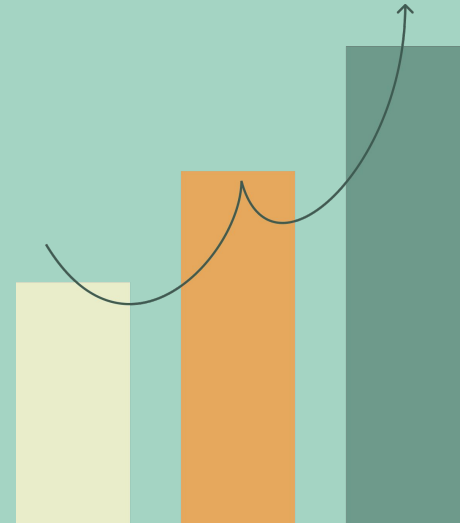
Misinformation, disinformation, and the death of expertise.

- **AI Companionship:** The risk of over-reliance.
- **The Death of Expertise:** Are we accepting probable as the new standard?
- **Misinformation & Disinformation:** How do we prepare our students?



*“We are in a war with AI. And I fear that we are losing that war. **Badly.**”*

Teacher



What Our Students Need in an Age of AI

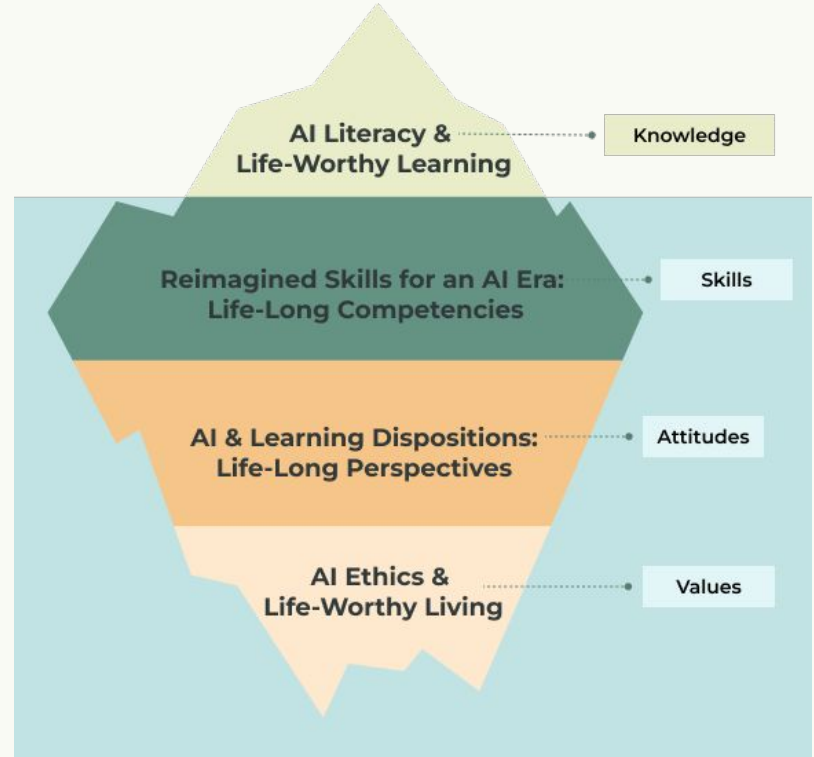
The Iceberg Model

Above water:

Visible information
and explicit
knowledge

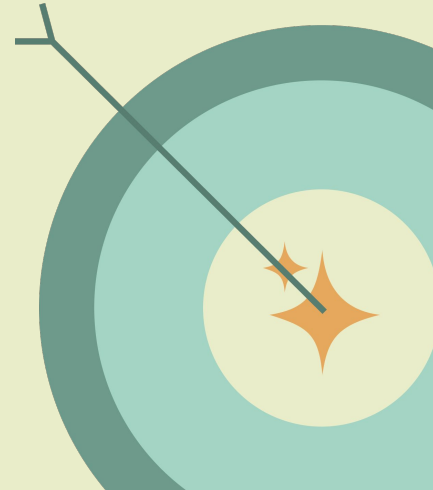
Below surface:

Deeper
understanding,
values, judgement



- *“I am tired of the kids who are using it doing better than me. **I am doing the “right thing”**, why am I punished for their cheating?”*
- *“I learn about so many things in school that are **way less useful and urgent than this** and it frustrates me”*
- *“I use it every day. For everything.”*

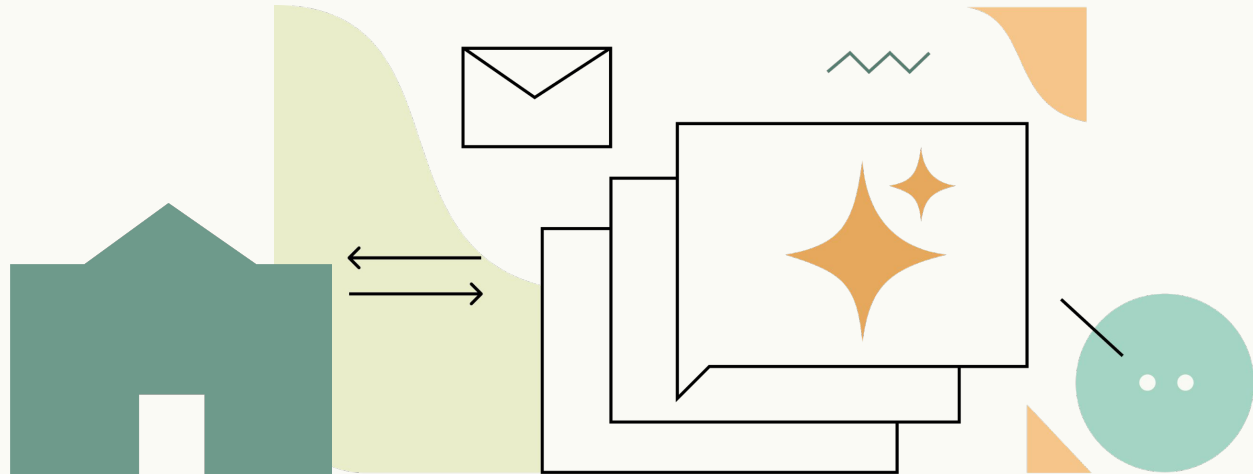
Students



From Strategy to School-Wide Change

Our goal is to ensure your entire school is:

1. **AI-Informed**
2. **AI-Safe**
3. **AI-Empowered**



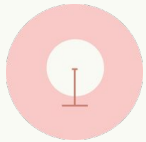
AI Standards for Schools



1. School Foundations



2. Community Readiness



3. Student Engagement



4. Continuous Improvement

Building an AI-Ready School

A framework to unpack how to lead responsible AI integration across your entire school community

Understand the
Landscape

Learn the **7 key trends**
of AI and education
research

Build Context

Identify the **6 critical risks**
AI poses for
international schools

Apply a
Strategic
Framework

Assess your school's
readiness against
the **Eblana 6P's** for
robust governance

**What
tips/implementation
ideas have worked
well?**



What tips/implementation ideas have worked well?

1. **Build a clear, shared vision early on**
2. **Vendor due diligence and proper research before adoption**
3. **Ensuring both tech and T&L leaders are involved**
4. **Ensuring there is a small AI Working Group in place that has dedicated time to research, make decisions and has a budget to work with**
5. **Invest in staff professional development**
6. **Be prepared to adjust and update documentation / vision / etc regularly**
7. **Establish and empower AI Champions / AI Working Group / AI Lead or Officer**

**What didn't or hasn't
worked well in terms of
AI implementation?**



What didn't / hasn't worked well in terms of AI implementation?

1. Reckless adoption
2. Not clarifying the Staff and Student Use Guidelines to a detailed level
3. Adopting too many tools
4. Lack of long-term planning or budgeting
5. Lack of ownership / AI Officer / AI Lead
6. Ignoring risk until it becomes a problem
7. Focusing on tool use instead of student impact
8. No measurement or feedback loops
9. Lack of communication with the community (board, parents, etc)

Building an AI-Ready School

A framework to unpack how to lead responsible AI integration across your entire school community

Understand the
Landscape

Learn the **7 key trends**
of AI and education
research

Build Context

Identify the **6 critical risks**
AI poses for
international schools

Apply a
Strategic
Framework

Assess your school's
readiness against
the **Eblana 6P's** for
robust governance

Lead Phased
Implementation

Use the **3-phase AI
implementation
framework** to guide
your next steps

AI Implementation Framework for International Schools

A strategic roadmap for ethical, responsible school-wide AI integration



Phase 1: School Foundations

- Establish a school-wide **AI Vision/Philosophy**
- Develop an **AI Policy**
- Define **AI Usage & Guidelines**
- Audit and update existing policies
- Establish strong **AI Governance** practices
- Develop your school's **Strategic Plan for AI**
- Craft an **AI Communication Plan**



Phase 2: Staff Readiness

- Essentials • **Leadership** Professional Development
- **AI Officer** Professional Development
- Level 1 • **Educator** Professional Development
- **Stakeholder Awareness** for Parents, Students and Governors
- Initial Launch • **K12/Continuum AI Curriculum**

Phase 3: Student Engagement

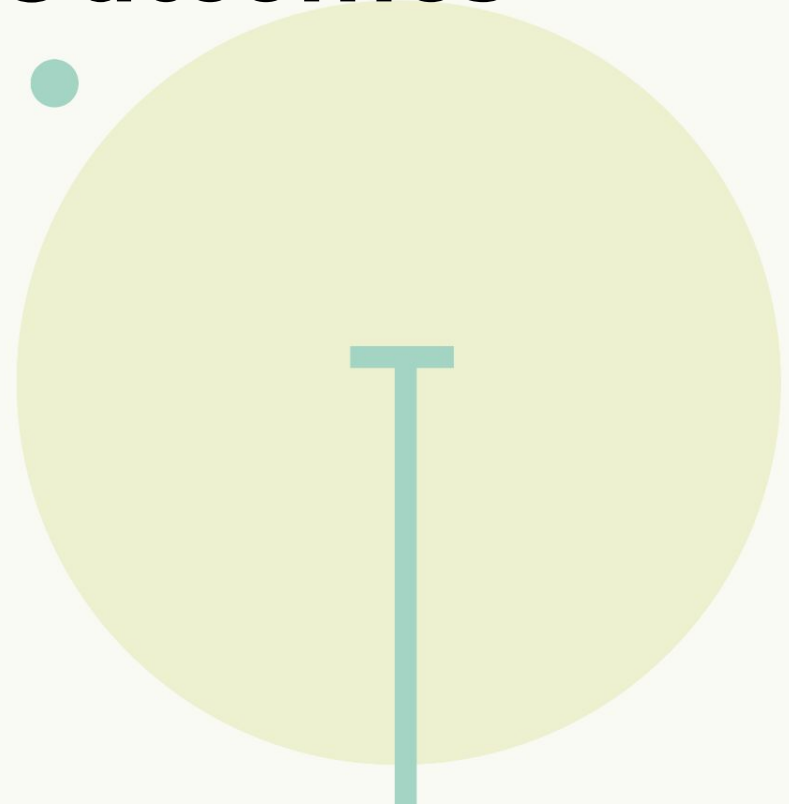


- Full Integration • **K12/Continuum AI Curriculum**
- Advanced • **Leadership** Professional Development
- Level 2 • **Educator** Professional Development
- Further Refinement • **K12/Continuum AI Curriculum**
- Ongoing **Stakeholder Engagement**

At Eblana, we've built all of the professional development modules and the AI Curriculum your school needs. Just reach out at info@eblanalearning.com.

Tangible School Outcomes

- **School Foundations:** The school has a clear AI roadmap with strong governance, clear policies, and a pedagogy-first vision.
- **Staff Efficacy:** Teachers and teams using AI ethically and efficiently to strengthen their practice, enhance classroom learning and save time.
- **Community Readiness:** Parents and stakeholder community are informed, aligned, and reassured in your school's approach to AI.
- **Student Engagement:** Students build real AI literacy, strong judgement, and the habits to use AI responsibly.

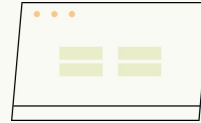


How Eblana Supports Schools



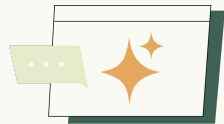
AI Professional Development

Bespoke in-person and virtual training designed to build whole-school confidence and clarity around AI



AI Curriculum

28 vertically aligned units and 400+ classroom resources to build AI literacy from ages 3–18



AI Academy

30+ on-demand professional learning courses covering AI strategy, literacy, ethics, safeguarding, and classroom practice



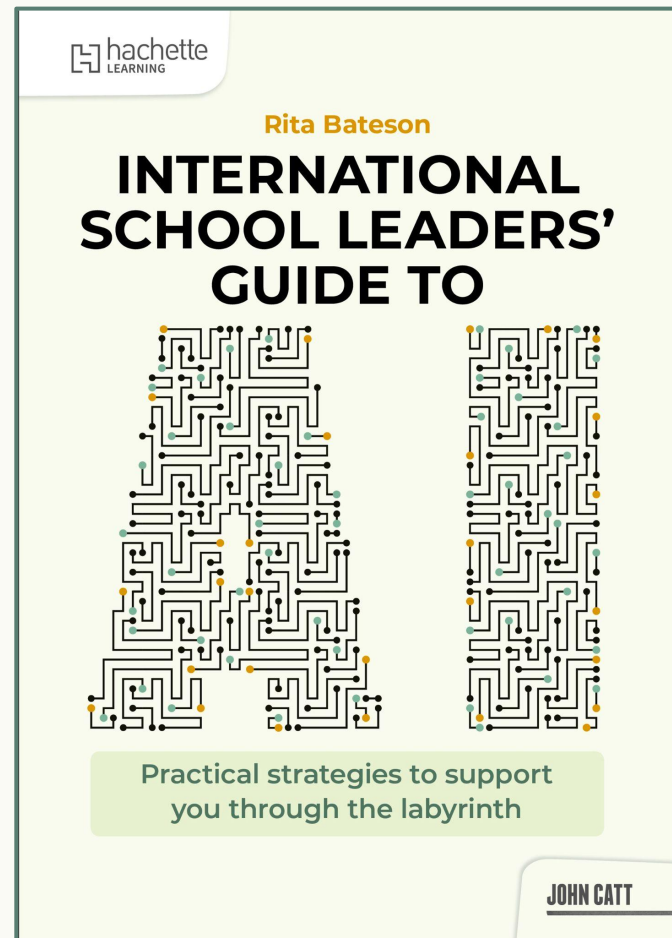
School-Wide AI Certification

A standards-based endorsement using Eblana's rigorous AI Standards and 32 indicators to recognise schools as AI-Certified (in progress) or AI-Certified (endorsed) for responsible AI innovation.

International School Leaders' Guide to AI

By Rita Bateson

	Chapters
1	AI & Leadership
2	AI & Good Governance
3	AI Strategy for Your School
4	Ethical AI
5	Sustainable AI
6	AI & Teachers
7	AI & Student Needs
8	AI & Safeguarding
9	AI & Families
10	AI & School Administration
11	Professional Learning Community Discussions



Thank you!



EBLANA LEARNING
Comprehensive AI guidance for IB schools

Rita Bateson FRSA ✓
Ethical AI for IB Schools 🧠🌐 | Author, Speaker, Consultant,
Curriculum Developer, Long-Standing IBEN 📄 | Founder of Eblana Learning 📖

Ireland · [Contact info](#)
500+ connections

 Eblana Learning

www.eblanalearning.com

